

ANIVERSARY

14
Years

COMMITTED TO THE INDUSTRY



SAP® Partner
Open Ecosystem

ORACLE® Gold Partner

2026



VISIT US ON delproingenieria.com

✉ contacto@delpro.cl

☎ + 56 600 612 61 26



▶ THE ASSURANCE OF YOUR MANAGEMENT IN THE HANDS OF AN EXPERT MANAGER.

DEIPIO
INGENIERIA & MANAGEMENT

Leaders in Latin American Industrial Management



Visit us
on our website



Follow us
on LinkedIn





With more than 14 years of experience, DELPRO is a world class company in Industrial Management, operating under the highest PMI® (Project Management Institute) international standards.

We offer our clients comprehensive management services, driven by state-of-the-art technology and focused on the deployment and strengthening of Project Management Offices (PMO), Technical Construction Inspection (CI), Contract Management, Claims Management and more.

To date, we have successfully managed 1,950 CAPEX initiatives and investment portfolios in strategic sectors such as Mining, Chemicals, Petrochemicals, Energy and Road Infrastructure, providing value, control and efficiency at every stage of the project life cycle.

Our team comprises PMP® and CAPM® certified professionals, dedicated to excellence, innovation and continuous improvement.

At DELPRO, we are reshaping project management across Latin America through technology, deep expertise and a strategic approach that sets us apart.

Entrust your management to true specialists.
Trust DELPRO

DELPRO IS CURRENTLY CERTIFIED:



DELPRO CERTIFIED PARTNER OF:

SAP® Partner
Open Ecosystem

ORACLE® Gold
Partner



TABLE OF CONTENTS

●	PRESENCE THROUGHOUT CHILE AND LATIN AMERICA	5
●	OUR EXPERIENCE	6
●	EXECUTIVE TEAM	7
●	TECHNOLOGICAL TOOLS	8
●	MAIN CLIENTS	9
●	01. SERVICES	10
	MINING.....	12
	ENERGY: OIL AND GAS.....	18
	CELLULOSE	24
	FEEDING	28
	TRANSPORT	30
●	02. TECHNOLOGICAL TOOLS	32
	ONLINE REPORTING	33
	SITE VIDEO CONTROL	36
	PM TRACK: SITE HEATMAP	39



▶ THE ASSURANCE OF YOUR MANAGEMENT IN THE HANDS OF AN EXPERT MANAGER.



PRESENCE THROUGHOUT CHILE AND LATIN AMERICA

PERÚ

Av. Dionisio Derteano 184
Oficina 603 | Piso 6
San Isidro, Lima.

+56 600 612 61 26
contacto@delpro.cl

CHILE

NODO NORTE
Av. Balmaceda 1750.
Oficina 1207 | Piso 1
Región de Antofagasta, Calama.

+56 600 612 61 26
contacto@delpro.cl

CASA MATRIZ
Av. Bosques de Montemar 30
Oficina 915
Región de Valparaíso, Reñaca.

+56 600 612 61 26
contacto@delpro.cl

NODO SUR
Av. Arturo Prat 199
Oficina 703
Región del Bío Bío, Concepción.

+56 600 612 61 26
contacto@delpro.cl

BRASIL

Al. Campinas 463 – conj. 1 C. Jardim
Paulista CEP: 01404-000
São Paulo.

+56 600 612 61 26
contacto@delpro.cl

ARGENTINA

Paraná 830. 2° y 3° piso
C1017AAR
Ciudad Autónoma de Buenos Aires.

+56 600 612 61 26
contacto@delpro.cl

Visit us at

 delproingenieria.com

 delpro.cl



ANIVERSARY

14
Years

COMMITTED TO THE INDUSTRY

▶ THE ASSURANCE OF YOUR MANAGEMENT IN THE HANDS OF AN EXPERT MANAGER.



OUR EXPERIENCE

At DELPRO we transform advanced project management technologies into practical, high-value solutions for our clients. Our engineering office provides continuous support with a firm commitment to ensure **quality, safety and excellence in each of the works we develop.**



SAP® Partner
Open Ecosystem

ORACLE® Gold Partner



EXECUTIVE TEAM



JORGE SANTANDER
MBA Mechanical Engineer

Business
Development Director



ANDRÉS BOBADILLA
ICI. Mechanical Engineer

Senior
Mining Advisor



LUIS COLINA
ICI. Mechanical Engineer

Director of
Strategic Alliances



JUAN CARLOS SOTO
MBA. Civil Industrial Engineer

CEO



VICTOR URRÁ
MBA Civil Industrial Engineer

Business Manager



CRISTIAN SBARBARO
MBA. Business Administrator

Corporate CFO



CATALINA PONCE
Industrial Engineer

COO



CAROLINA OYARCE
Civil Construction Engineer

CSO



TECHNOLOGICAL TOOLS



ONLINE REPORTING
Real-time key data enabling strategic decision-making.



SITE VIDEO CONTROL
24/7 monitoring with smart cameras.



SITE HEATMAP
Real-time control of on-site personnel with GPS technology.

EXPLORE OUR CATALOG AND DISCOVER HOW TO OPTIMIZE YOUR OPERATION WITH STATE-OF-THE-ART TECHNOLOGY.



MAIN CLIENTS



01 SERVICES



SAP® Partner
Open Ecosystem

ORACLE® Gold
Partner



PROJECT MANAGEMENT

- PROJECT MANAGEMENT / EPC, EPCM
- "CI" TECHNICAL CONSTRUCTION INSPECTION
- "PPC" PROJECT PLANNING AND CONTROL
- "PMO" PROJECT MANAGEMENT OFFICE DESIGN AND IMPLEMENTATION
- COUNTERPART ENGINEERING
- "IPA" INVESTMENT PROJECT ANALYSIS
- "CLAIMS" CONTRACT MANAGEMENT
- CONTRACT MANAGER
- TURNAROUND MANAGEMENT



INDUSTRIAL MANAGEMENT

- BACK OFFICE / INDUSTRIAL SAFETY AND HYGIENE MANAGEMENT
- BACK OFFICE / PROCUREMENT AND CONTRACT MANAGEMENT
- BACK OFFICE / COMMERCIAL CONTRACT ADMINISTRATION MANAGEMENT
- BACK OFFICE / ENVIROMENTAL MANAGEMENT



MULTIDISCIPLINARY ENGINEERING

- CE CONCEPTUAL ENGINEERING
- BE BASIC ENGINEERING
- DE DETAIL ENGINEERING
- ENGINEERING INSPECTION / TECHNICAL COUNTERPART

MINING



SAP® Partner
Open Ecosystem

ORACLE® Gold Partner



▶ THE ASSURANCE OF YOUR MANAGEMENT IN THE HANDS OF AN EXPERT MANAGER.





GERENCIA
GCM
2024 - 2027

Regulatory compliance audit for investment projects (SIC, NCC 30 rev 2 and SOMMA 2022) for Corporate Mining Management.

Foundry maintenance project management service.

SSO Management Support Service.

Sampling Services (PCR and rapid tests).

General clinical support services.

Comprehensive SSO Management support service.

COVID health contingency monitoring and follow-up service.

Comprehensive support to the Management of delegated administration of Law 16,744 for SATEP.

COVID monitoring, control and traceability service.

Behavioral safety service.

Management service pursuant to SUSESO regulations and COVID-19 Corporate Instructions.

Technical services and performance monitoring of investment projects in maintainability and reliability.

Planning, scheduling, monitoring and control of the execution of routine and general maintenance.

Safety inspection and planning service for the maintenance of the Caletones smelter.

DIVISIÓN
CHUQUICAMATA
2020 - 2023

DIVISIÓN
EL TENIENTE
2022 - 2026



DIVISIÓN
RADOMIRO TOMIC
2022 - 2024

- Support in equipment dispatch, document and safety management for the engineering and mine process control superintendence.

DIVISIÓN
VENTANAS
2022 - 2026

- SSO management service for the Ventanas division.

- Covid health contingency monitoring and follow-up service.

DIVISIÓN
EL SALVADOR
2022 - 2028

- Occupational health operational leader service.

- Occupational medical service.

- Occupational nursing service.

- Mental health service.

- Ergonomics service.

- Occupational hygiene service.

- Specialized technical support service.

GERENCIA
GCEM
2023 - 2026

- Support service for the optimization of project development for the corporate management of mining studies.



FUNDICIÓN
ALTONORTE
2018-2024

- Field engineering support services for multidisciplinary projects.
- Service of project engineers and DGP supervisors.
- Technical construction inspection service.
- CI service and project support planning.
- Technical construction inspection service and detailed inspection of engineering framework contract.
- Field support service for the supervision and technical construction inspection for the DGP 2023 major maintenance.



MINA
CERRO NEGRO
2019 - 2020

- Comprehensive management of project portfolio administration, technical assistant management and comprehensive project management and control through the use of advanced Project Management tools.

MINA
EL ROMERAL
2019 - 2020

- Comprehensive management of project portfolio administration, technical assistant management and comprehensive project management and control through the use of advanced Project Management tools.

MINA
LOS COLORADOS
2019 - 2020

- Comprehensive management of project portfolio administration, technical assistant management and comprehensive project management and control through the use of advanced Project Management tools.

PLANTA
**GERENCIA DE
PROYECTOS**
2021 - 2022

● Engineering counterpart services and project management support.

PLANTA
MANTOS BLANCOS
2021 - 2024

● SSO management service for the Ventanas division.

PLANTA
DELTA
2021 - 2023

● First aid, rescue and patient transfer services and management.

PLANTA
VALLENAR
2021- 2022

● Support services in quality control.

● Support services in construction.

● Management support service for hydraulic civil engineering.

● Document control support service.

● Engineering services in programming and control, and technical drawings.

● Archaeological identification, recording and description service.

● Contracting of structural and mechanical engineering services.

ENERGY

OIL AND GAS



SAP® Partner
Open Ecosystem



Gold Partner



▶ THE ASSURANCE OF YOUR MANAGEMENT IN THE HANDS OF AN EXPERT MANAGER.



- Project Management Service for the inspection and comprehensive control of the construction, PEM assembly for WSA/SWS3 project.
- Spare parts review and husbandry service (ERA assets and BOM construction).
- Reliability management support service in maintenance engineering.
- Major maintenance planning and control service, 2023 - 2027.
- Maintenance planning and control service for storage tanks, 2023 - 2027.
- Comprehensive service for the inspection and control of developed projects.
- Support service for refining and marketing business line projects.
- Service of management and administration of transactional processes of goods and services.
- Minor purchases service.
- Quality assurance service, programming and control of the Coker automatic opening project.
- Management and control of engineering projects.
- Development and control of maintenance projects, 2014 - 2018.
- Planning and control of storage tanks maintenance.
- Development and control of operational improvement projects.
- Planning, control and document management of the Enap project "electrical interconnection and steam co-generation plant".
- Technical information surveying for the maintenance department.

PLANTA
BÍO BÍO
2015-2026

- Major maintenance planning and control service, 2023 - 2027.
- Support service for refining and marketing business line projects.
- Service of management and administration of transactional processes of goods and services.
- Minor purchases services.
- Scheduled maintenance planning and control service.
- Minor project management service.
- Development and control of maintenance projects.

PLANTA
SIPETROL
2021-2024

- Major maintenance planning and control service, 2023 - 2027.
- Service of management and administration of transactional processes of goods and services.
- Back Office services - Minor purchases.
- Back Office services - mobilization.



PLANTA
MAGALLANES
2021-2027

- Major maintenance planning and control service, 2023 - 2027.
- Service of management and administration of transactional processes of goods and services.
- Back Office services - Minor purchases.
- Back Office services - mobilization.

PLANTA
DAO
2021-2024

- Service of management and administration of transactional processes of goods and services.
- Back Office services - Minor purchases.
- Back Office services - mobilization.



PLANTA
VENTANAS
2014-2018

- Maintenance, planning, scheduling, job control and SAP PM processing management.

GUACOLDA
energía

PLANTA
GUACOLDA
2022-2025

Technical inspection support to Guacolda's Engineering Department, through a staff of professionals from various specialities, such as electricity, instrumentation, mechanics, transmission lines, structures, protections, multiple tasks, among others.

 **OXIQUIM**

TERMINAL
QUINTERO
2018 - 2023

Servicio integral de apoyo a la gestión documental técnica y proyección mecánica de piping de proyectos de mantención y portafolio proyectos del Terminal Marítimo Quintero.

CELLULOSE



SAP® Partner
Open Ecosystem

ORACLE® Gold Partner



▶ THE ASSURANCE OF YOUR MANAGEMENT IN THE HANDS OF AN EXPERT MANAGER.





PLANTA
VALDIVIA
2012 - 2015

Planning and control of maintenance shutdowns.

PLANTA
ARAUCO
2012 - 2015

Planning and control of maintenance shutdowns.

PLANTA
NUEVA ALDEA
2014 - 2015

SAP PM updates of prevention plans, planning and control of maintenance shutdowns.

PLANTA
LICANCEL
2014 - 2014

Maintenance, planning, scheduling, job control and SAP PM processing management.



PLANTA
PACÍFICO
2015- 2015

Maintenance, planning, scheduling, job control and SAP PM processing management.

PLANTA
SANTA FÉ
2015- 2015

Maintenance, planning, scheduling, job control and SAP PM processing management.



PLANTA
CABREROS
2023 - 2023

Service for the generation, review and modification of prevention plans.

PLANTA
MAPAL
2023 - 2023

Service for the generation, review and modification of prevention plans.



▶ THE ASSURANCE OF YOUR MANAGEMENT IN THE HANDS OF AN EXPERT MANAGER.



FEEDING

empresas
piansa

beneo
connecting nutrition and health



SAP® Partner
Open Ecosystem

ORACLE Gold Partner



PLANTA
CHILLÁN
2020 - 2020

- Installation of thermal insulation of pre-heater piping.
- Manufacture and assembly of piping line for CO₂ gas scrubber for lime kiln.

PLANTA
ÑUBLE
2017 - 2018

- Multidisciplinary technical construction inspection, planning and control of work shift generator.
- Electrical engineering for low and medium voltage systems, turbo generator project.
- Contract management and SAP PM updates, and technical asset information.



PLANTA
PEUMO
2021 - 2022

- Support services for detail engineering.



▶ THE ASSURANCE OF YOUR MANAGEMENT IN THE HANDS OF AN EXPERT MANAGER.



TRANSPORT



efe TRENES DE CHILE



SAP® Partner
Open Ecosystem



Gold Partner

V REGIÓN
CONCÓN
2025- 2025

Supervision service, technical construction inspection for the Engineering Project, supply, installation and commissioning of automatic grade crossing protection Concón.

SER
CONCEPCIÓN
QUILACOYA
ESCUADRÓN
LAJA
2024 - 2027

Project Management service for engineering review and technical inspection of EPC projects: "Standardization of rectifier groups of the Efe southern network".

PUENTE
CHANCO
2024- 2024

Technical inspection services for the Chanco bridge repair project, located in the Araucanía region.

PUENTE
LONGAVÍ
2023 -2024

Technical inspection service for the emergency repair of the Longaví bridge, located in the Maule region.

PUENTE
ARICA
2021 - 2021

Technical construction inspection service for the replacement of river defenses and culverts, Fcal.

02

TECHNOLOGICAL TOOLS



SAP® Partner
Open Ecosystem

ORACLE® Gold
Partner



THE ASSURANCE OF YOUR MANAGEMENT IN THE HANDS OF AN EXPERT MANAGER.



ONLINE REPORTING

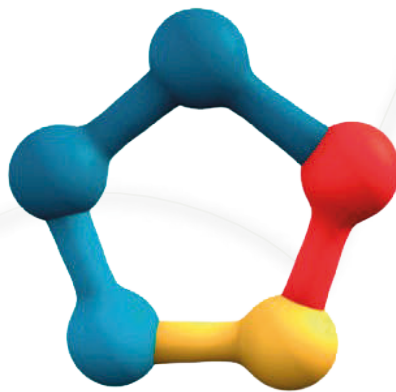


SAP® Partner
Open Ecosystem

ORACLE® Gold Partner

WE OPTIMIZE PRODUCTIVITY.

Over 25 years of business experience oriented to the management by objectives and projects of its founders, embodied in this “Software as a Service” platform.



ProactiveOffice.com

Through its systems for Initiative Management, Project Management, Contract Management and Indicator Management, our platform offers a complete suite to digitally transform the Management and support the progress of our generation.



MANAGEMENT PROJECT

The simplest and most adaptable online project management software, providing efficiency and proactivity to initiatives, projects and contracts.



MANAGEMENT CONTRACT

Capture the data created by your information directly from its source, consolidate the quantitative, qualitative and management information of your contracts and obtain accurate online reporting.



MANAGEMENT COST

Manage your contract costs using AACE International best practices, import information directly from your ERP (SAP, Ellipse, Excel or others) or from your planners (Primavera, MS-Project, etc.)



MANAGEMENT INITIATIVE

Facilitate and standarize selection processes, OPEN-INNOVATION, CAPEX Allocation, Public Bids, Innovation, Tenders, Personnel Selection, etc., through a powerful platform that leverages the best practices of the most widespread standards, centralizing application forms, qualitative assessment via web, and automating the quantitative analysis to always pick the best.





▶ THE ASSURANCE OF YOUR MANAGEMENT IN THE HANDS OF AN EXPERT MANAGER.



SITE VIDEO CONTROL



SAP® Partner
Open Ecosystem

ORACLE® Gold Partner

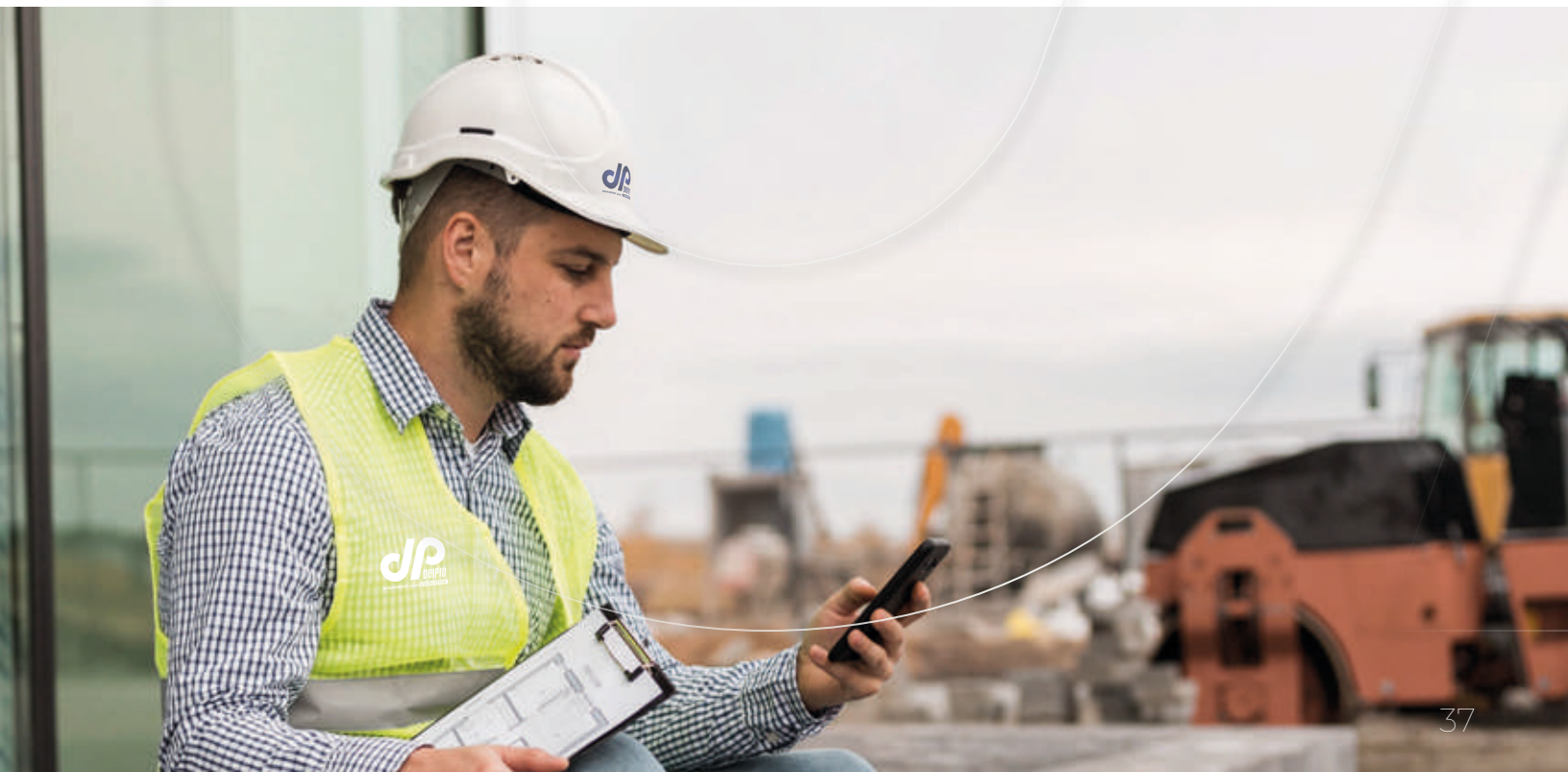


182.589.115

Hours monitored
to our clients.

95.000

Deviations corrected
on site.



FEATURES THAT DRIVE THE SUCCESS OF YOUR PROJECT

With automatic protocols, minimizing the impact of any unforeseen events. With our advanced monitoring solution, you not only optimize oversight, but also get proactive incident management, improving decision making and maximizing project profitability. The key benefits of deploying this technology are clear:



1

REAL-TIME MONITORING

For fast and well-informed decisions, optimizing the workflow.

2

OPERATIONAL RISK REDUCTION

Guaranteed safety for a safer and more stable working environment.

3

DATA-DRIVEN DECISION MAKING

Provided by a smart monitoring system.

4

SIGNIFICANT SAVINGS

In on-site oversight costs, using advanced technology to improve efficiency.

5

RAPID RESPONSE TO INCIDENTS

With automatic protocols, minimizing the impact of any unforeseen events.



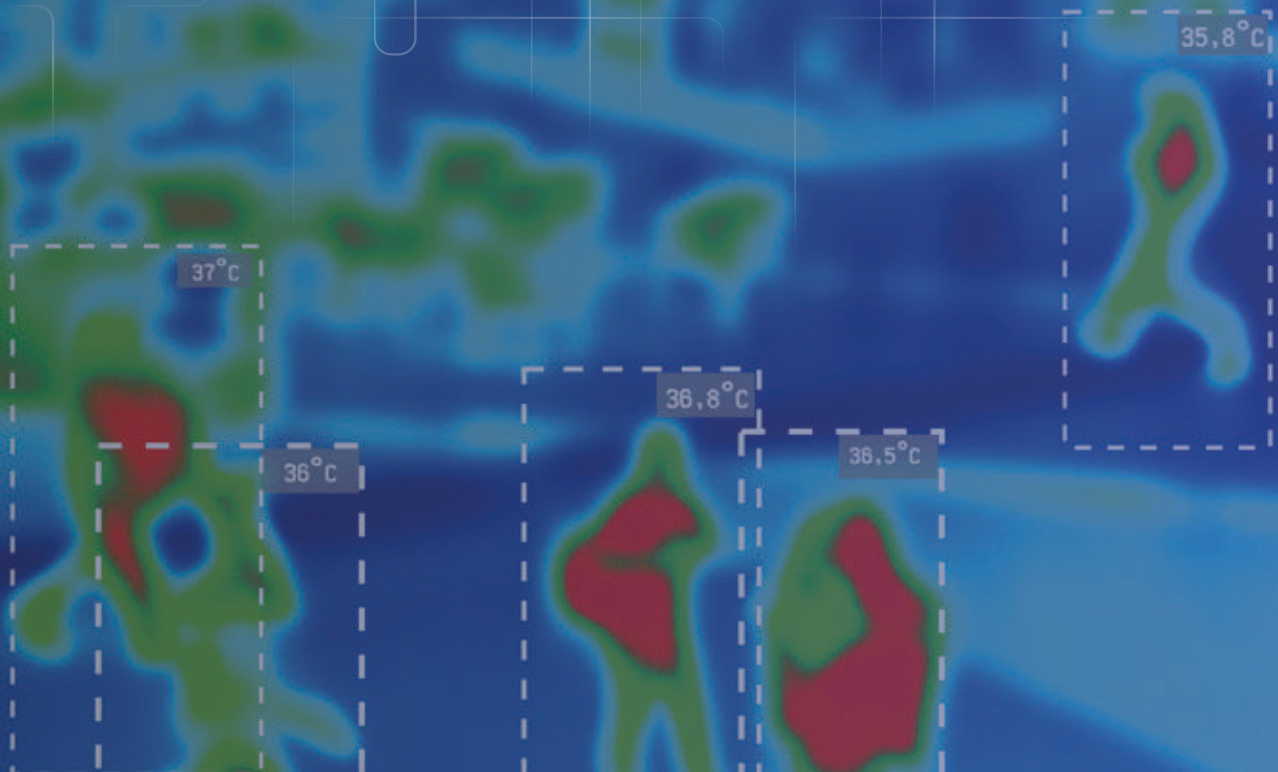


▶ THE ASSURANCE OF YOUR MANAGEMENT IN THE HANDS OF AN EXPERT MANAGER.



PM TRACK

SITE HEATMAP



SAP® Partner
Open Ecosystem

ORACLE® Gold Partner

The PM TRACK service is designed to provide real-time monitoring of direct personnel on site, using GPS technology and advanced management platforms. This system enables construction, industrial and infrastructure companies to accurately monitor the location, productivity and safety of their equipment in the field, optimizing operational management and ensuring regulatory and contractual compliance.

KEY BENEFITS

- 1 OPERATIONAL CONTROL OPTIMIZATION**
Reduction of unproductive time and improvement in task assignment.
- 2 GREATER ON-SITE SAFETY**
Detection and immediate response to emergencies.
- 3 REGULATORY COMPLIANCE AND DIGITAL AUDITING**
Accurate recording of hours worked and on-site attendance.
- 4 LABOR COST EFFICIENCY**
Reduction of costs connected to unnecessary travel and optimization shifts.
- 5 FULL VISIBILITY FOR THE CLIENT AND PROJECT MANAGER**
Transparency in KPI management and control in real time.

MAIN FEATURES



Real-Time Monitoring

Each worker has a tracking device built into their access badge, cell phone or wearable, enabling the visualization of their exact location at the work site via a web platform and mobile application.



Integration with Project Management Software

PM TRACK syncs with tools such as Primavera P6, MS Project, linking the presence and activity of personnel to the progress of critical project tasks.



Geofencing and Control of Restricted Areas

Configuration of secure work zones and restricted perimeters, with automatic alerts in case of entry or exit from unauthorized areas.



Productivity Reporting and Analysis

Generation of automatic reports on actual work times, routes traveled, active hours and areas of most activity, allowing for the optimization of human resources management.



Safety and Emergency Response

In case of incidents or evacuations, the system provides the exact location of each worker, streamlining response and improving safety protocols.



Cloud Platform with Predictive AI

All data is stored in a secure cloud infrastructure (AWS, Azure or Google Cloud), enabling artificial intelligence analysis to predict productivity patterns and operational risks.



Compatibility with Biometric and Access Control Systems

Integration with facial recognition, fingerprint and RFID systems, ensuring the validation of authorized personnel on site.

Our technological solutions revolutionize on-site supervision, providing absolute control, safety and operational efficiency at every stage of the project.



Visit us
on our website



Follow us
on LinkedIn





ANIVERSARY

14
Years

COMMITTED TO THE INDUSTRY